

▲ Gait analysis and investigation

Force plate (kinetic) and movement (kinematic) analysis in the canine gait laboratory form an integral part of the investigation of lameness and of outcome assessment, following treatment



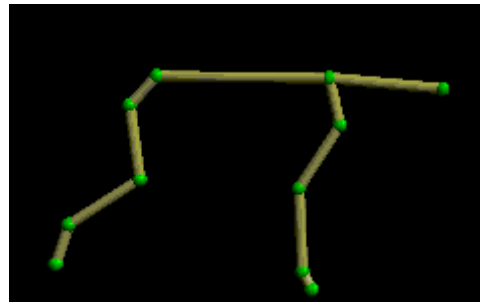
Preoperative gait assessment of a Labrador that is lame because of cranial cruciate ligament disease



Assessment of lameness by force plate



Retroreflective markers are placed on anatomical landmarks for kinematic gait analysis



Computer generated image used in gait analysis

Department of Clinical Veterinary Science,
University of Bristol, Langford House,
Langford, North Somerset, BS40 5DU
© 2002-2008 University of Bristol Updated 16/08/2006 by Site Admin